


Connecting to Nuvance Health VPN

Target Audience: All Nuvance Employees

In order to standardize, all Nuvance Health Employees will use a singular link for connecting into the Virtual Private Network via **Google Chrome** or **Microsoft Edge**. **Full VPN option is only available to Nuvance-issued devices. All others will get StoreFront access only.**

Connecting to the VPN:

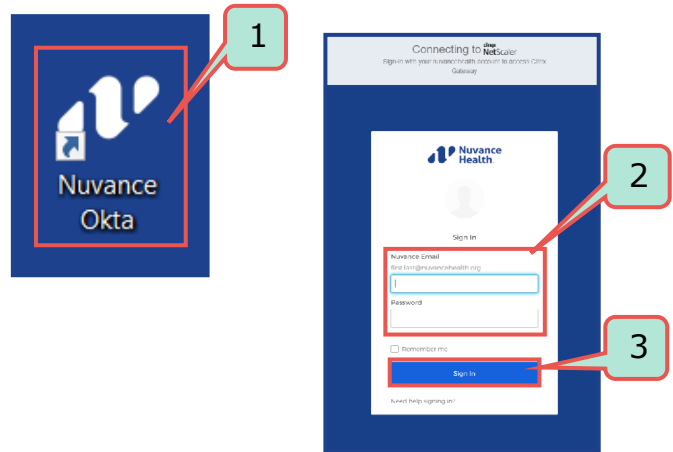
1. Click **Nuvance Okta**

 If you don't have this icon, you can navigate to <https://nuvancehealth.okta.com> in either Chrome or Edge browsers.

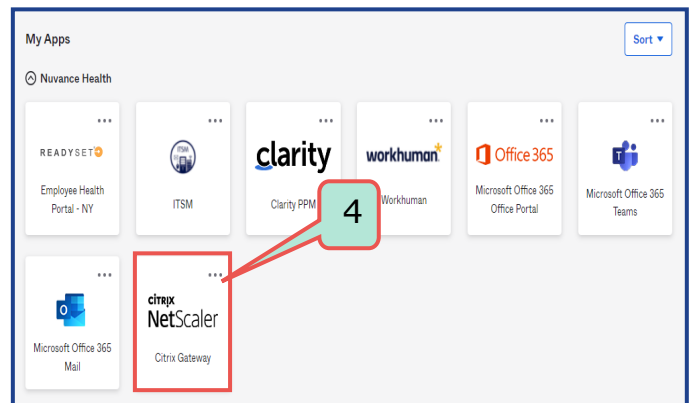
2. Enter your **Nuvance Email** and **Password**

3. Click **Sign In**

You will be prompted to verify your credentials through Okta's Two-Factor Authentication



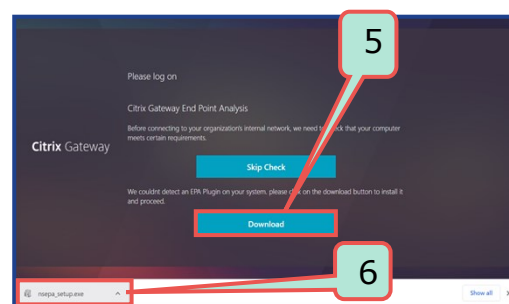
4. Click **Citrix NetScaler**



The first time that you connect, you may be prompted to install the application that performs the security scan

5. If prompted, click **Download**

6. Click **nsepa_setup.exe** to run the installer

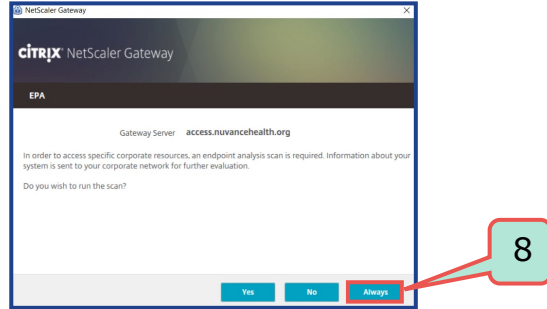


7. Click **Install**



Connecting to Nuvance Health VPN

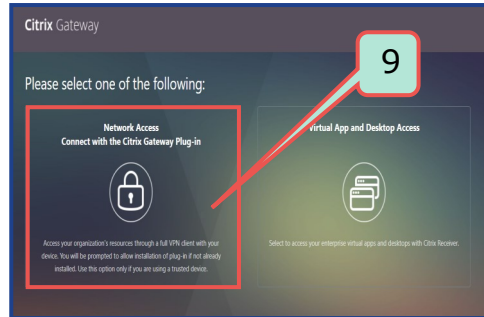
Citrix **NetScaler Gateway** pop-up displays indicating it will attempt to perform an Endpoint Analysis scan



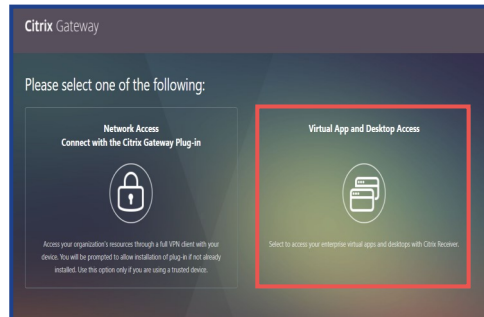
8. Click **Always**


Citrix Gateway displays

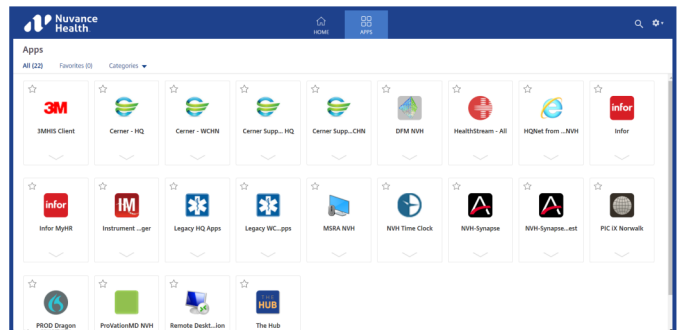
9. Select **Network Access**



You will now be connected to the VPN.



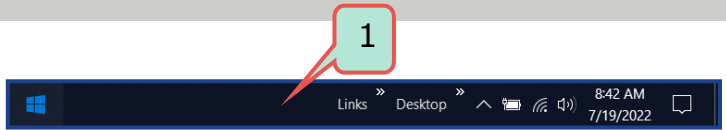
 If you are using a non-Nuvance device, you choose to skip the End Point Analysis check, your device fails or if you do not have approved VPN access, you cannot connect to the VPN. You will be taken directly to your Citrix StoreFront. This will also happen if you click **Virtual App and Desktop Access**.



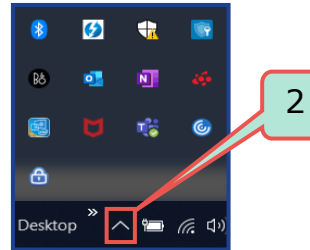
Connecting to NuVance Health VPN

Disconnecting from the VPN:

1. Navigate to the Taskbar

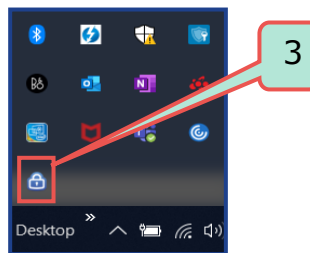


2. Click the up arrow to **Show Hidden Icons**



Windows **System Tray** displays

3. Click 



NetScaler Gateway box opens

4. Click **Logoff**

